



King James I Academy Sixth Form

# PROSPECTUS



# Contents

Welcome	1
About us	2
Subject Pathways	3
Accounting	4
Art (Fine Art)	5
Biology	6
Business Studies	7
Chemistry	8
Computer Science	9
Creative Media Production	10
Criminology	11
English Literature and Language	12
Extended Project Qualification	13
Food Science & Nutrition	14
Further Maths	15
Geography	16
Health & Social Care	17
History	18
Human Biology	19
IT: Data Analysis	20
Maths	21
Mathematical Studies	22
Music Practitioners	23
Performing Arts	24
Photography	25
Physics	26
Psychology	27
Sociology	28
Sports	29
Level 2 Pathway	30

# Welcome

Welcome to King James I Academy Sixth Form. We are so pleased that you are considering our centre as one of your Post 16 Options. We are a school based, small sixth form centre and I can confidently say that we support our students exceptionally well as they make the transition to becoming independent young adults who are ready to confidently take their post 18 steps.



Whilst we are a small centre, we have over 25 A level and other level 3 courses on offer and our curriculum is designed to meet a range of student needs and interests. We review our offer yearly to ensure we continue to provide courses which will support students to successfully progress into Higher Education, Further Education, apprenticeships or full-time employment. New for 2025/26, we have our Subject Pathways, which are subject combinations designed to support progression into a specific future career routes.

We offer an enrichment and personal development programme to run alongside academic study as part of our commitment to ensure that students not only make strong academic progress but also develop the skills and gain the experiences which will secure their success moving forward in the future.

I hope to welcome you in the near future to our Sixth Form Centre.

Gail Nicholson

Head of Sixth Form



## About us

King James I Academy is a historic institution serving Bishop Auckland and the surrounding area, having been established in 1605 as a Grammar School within the town prior to relocating to our current site in the mid 1800s. Along with our historic groundings in the community, a number of our teaching and support staff are also former students of the school, demonstrating our commitment to promoting social mobility, along with a sense of pride in seeing our students grow and succeed.

## Why Choose Us?

- 100% pass rate across all qualification types\*
- 100% of students with university offers secure their choice of placements\*
- Above national average for state school performance and progress\*
- Personal Development programme specific and relevant to young adults
- Enrichment programme to support you in being successful in your next steps
- High quality Careers Advice, and preparation for interviews
- Small, welcoming, and friendly environment

\*based on 2024 data



## Subject Pathways

Whilst students can select from the range of subjects on offer, we do also offer a number of subject pathways which are designed to support progression into a specific sector, industry or higher education. Please refer to our Subject Pathways booklet for further information on:

- Business & Finance
- Creative Arts
- Engineering
- Healthcare
- Humanities
- Medical Sciences
- Social Care
- Sports
- Sport Nutrition
- Web / Game Design

## How to apply

It's easy to find out information and apply for King James I Academy Sixth Form online. Just follow the link to Sixth Form on our website homepage at [www.kingjames1academy.com](http://www.kingjames1academy.com)



## Accounting - A' Level

### ENTRY REQUIREMENTS

GCSE Maths Grade 6 & GCSE English Language Grade 5.

### COURSE CONTENT

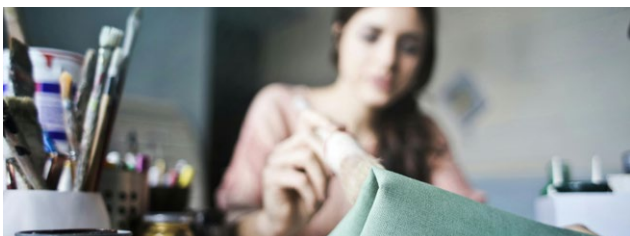
The aim of this course is to develop an understanding of the purposes and principles of Accounting and to develop the skills of presentation, analysis and interpretation of accounting information. This A' Level course will cover methods of accounting and record keeping; accounting for different business types; costing and analysis; and ethical considerations in industry. Topics include the double entry model; verification of accounting records; interpretation, analysis and communication of accounting information; and the impact of ethical considerations.

### ASSESSMENT INFORMATION

A' Level Accounting is a linear course and students will be assessed at the end of Year 13. There are two papers, each consisting of a formal three-hour written exam worth 120 marks and 50% of the final A' Level grade.

### FUTURE PROGRESSION

This qualification provides an ideal stepping stone towards professional Accounting qualifications such as AAT, CIMA, CIPFA, ACCA and ACA, as well as progression onto Accounting, Finance or Business related degree courses at university. There are also opportunities for degree apprenticeships in this field.



## Art (Fine Art) - A' Level

### ENTRY REQUIREMENTS

Grade 6 in GCSE Art. However, grade 5 or no prior study may be satisfactory pending a portfolio review with department.

### COURSE CONTENT

Students will undertake a preliminary 6 week experimental project, focused on the development of skills which are essential for A' Level study in Fine Art. This will then lead into Component 1's research and artwork; this is supported by a 3,000 word piece which supports the practical work undertaken. In their second year, students will work on their externally set assignment, Component 2, where they will produce a second portfolio of work and final piece under exam conditions.

### ASSESSMENT INFORMATION

The course consists of two components, both of which are internally assessed and externally moderated. Component 1, entitled 'Personal investigation', is worth 60% of the final grade and Component 2 is an externally set exam which is worth 40%.

### FUTURE PROGRESSION

This qualification provides an excellent basis for progression onto a wide variety of art and design related undergraduate courses at university, or onto apprenticeship programmes or work within the industry. Students may aspire to a career as a professional artist, Set or costume designer, Game designer or Animator.



## Biology - AS & A' Level

### ENTRY REQUIREMENTS

Grade 6 in GCSE Biology or grade 6-6 in Combined Science, plus grade 6 in Maths.

### COURSE CONTENT

Biology is the study of all things living and life itself. The course is about the natural world and the interactions with all the organisms living within it. Each lesson explores the theories, principles and intricacies involved in all living systems past and present. A' Level Biology covers a broad range of topics including: Biological Molecules, Cells, Exchange and Transport Systems, Genetic Information, Variation and Relationships, Energy Transfers, Organismal Responses to Changes in Their Internal and External Environments, Genetics, Populations, Evolution and Ecosystems, and Control of Gene Expression.

### ASSESSMENT INFORMATION

For the AS, which will be taken at the end of Year 12, there are two 90-minute examinations of 75 marks. For the A' Level qualification, which will be taken at the end of Year 13, there are three 2-hour exam papers covering all content from the two year course.

### FUTURE PROGRESSION

Students can progress into careers in Medicine, Veterinary Science, Dentistry, Pathology, Pharmacology, Marine Biology, Palaeontology, Bio-Medical Sciences, Lab Work and Physiotherapy.



## Business Studies - BTEC Level 3 National Extended Certificate

### ENTRY REQUIREMENTS

5 GCSE's at Grades 4 and above, including English and Maths.

### COURSE CONTENT

Learners study the purposes of different businesses, their structure, the effect of the external environment, and how they need to be dynamic and innovative to survive. You will then study marketing campaigns to gain an understanding of how these are developed, and will also explore the purpose and importance of both personal and business finance, developing the skills and knowledge needed to understand, analyse and prepare financial information. Finally, you will explore how the recruitment process is carried out and have the opportunity to participate in selection interviews.

### ASSESSMENT INFORMATION

The course is split into four units; two of these are coursework based and internally assessed, and two are written, externally assessed exams.

### FUTURE PROGRESSION

With this qualification, students will be well placed to study a variety of courses at university and move into Business Management, Business Administration, Marketing, Finance, Recruitment, Leadership and IT.



## Chemistry - AS & A' Level

### ENTRY REQUIREMENTS

Grade 6 in GCSE Chemistry, a grade 6-6 in Combined Science plus grade 6 in Maths.

### COURSE CONTENT

Chemistry is the scientific study of matter, including its composition, structure and properties. It's a core science that explores how substances are made, how they behave, and how they change when they react. Essentially, Chemistry explains the "what" and "how" of everything in the universe, from the smallest atoms to the most complex materials. A' Level Chemistry is broken into three strands: Organic Chemistry; Inorganic Chemistry; and Physical Chemistry. These modules are studied across two years, with Year 13 learning building upon the knowledge, skills and understanding which is acquired in Year 12.

### ASSESSMENT INFORMATION

The AS qualification is completed at the end of Year 12 with two 90-minute exam papers, and the A' Level is taken at the end of Year 13 with three 2-hour exam papers.

### FUTURE PROGRESSION

This is the ideal qualification for those interested in a career as a Crime Scene Investigator, Toxicologist, most medical careers including Veterinarian, Dentist, Oceanographer, Pharmacologist, Chemical Engineer and Food Technologist.



## Computer Science - A' Level

### ENTRY REQUIREMENTS

Grade 6 in GCSE Computer Science, plus English grade 4 and Maths grade 5 or above.

### COURSE CONTENT

Computer Science is an intensely creative subject that combines invention and excitement. An A' Level in Computer Science will value computational thinking, helping learners to develop the skills to solve problems, design systems and understand the power and limits of human and machine intelligence. Topics include the characteristics of contemporary processors, input, output and storage devices; software and software development; exchanging data, data types, data structures and algorithms; legal, moral, cultural and ethical issues: problem solving and programming; and algorithms to solve problems.

### ASSESSMENT INFORMATION

There are two written exams, both of which are worth 40% of the total A' Level and each paper is 2 hours and 30 minutes long. There is also a non-exam programming project worth 20% of the overall grade.

### FUTURE PROGRESSION

The course will provide learners with transferable skills which will facilitate personal growth and foster cross curriculum links in areas such as Maths, Science and Design & Technology; this could lead to success in various university courses and apprenticeships.



## Creative Media Production - BTEC Level 3 National Foundation Diploma

### ENTRY REQUIREMENTS

English at grade 5, plus four other GCSEs at grade 4.

### COURSE CONTENT

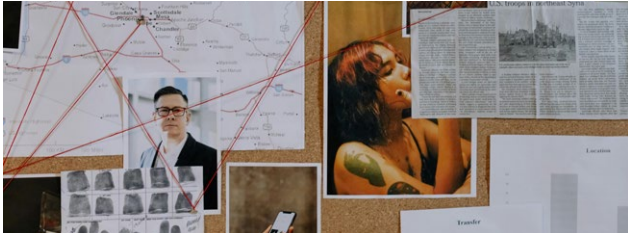
The course, which is equivalent to 1.5 A' Levels, provides a broad overview of the media industry through theoretical study and practical application. Students learn why media producers make specific choices to appeal to an audience, and create professional products using techniques in film making, graphic design, journalism and marketing. Students analyse movies, TV shows, music videos, computer games and printed products, and create products such as short films and magazines in a genre of their choice. They develop skills in script writing, journalism, shooting and editing film footage, photography, page layout and marketing.

### ASSESSMENT INFORMATION

There are two externally assessed units, and four coursework units which are internally assessed and externally moderated.

### FUTURE PROGRESSION

Students may progress onto degree courses connected to Film & TV Production, Set & Costume Design, Photography, Graphic Design, Journalism, Marketing, Advertising, Social Media Management and Game Development. Apprenticeships are also becoming available for these areas of the industry.



## Criminology - Level 3 Applied Certificate or Diploma

### ENTRY REQUIREMENTS

Minimum of 5 GCSEs at grade 4 or above, including English Literature or Language.

### COURSE CONTENT

The course explores how crime is punished in the context of society using case studies, theoretical ideas and assessment methods that will enhance your career-readiness. There are four units of study; 'Changing Awareness of Crime' explores types of crime and statistical trends; 'Criminological Theories', introduces a range of the theories about why crime occurs, from biological, individualistic and sociological standpoints; 'Crime Scene to Courtroom' helps you to understand the criminal justice system; and 'Crime and Punishment' covers society's approaches to criminal behaviour.

### ASSESSMENT INFORMATION

There are two controlled assessment units, each worth 25% of the diploma, where notes are used to complete a typed assignment based on an unseen brief. There are also two 90-minute externally examined units, each worth 25% of the diploma.

### FUTURE PROGRESSION

Students may aspire to be a Police, Prison or Probation Officer, Social Worker, Victim Support Officer, Emergency Call Handler, Scene of Crime Officer, Youth Worker, Social Researcher or Solicitor.



## English Literature & Language - A' Level

### ENTRY REQUIREMENTS

Grade 6 in English Language or Literature, plus 4 other GCSEs at grade 4.

### COURSE CONTENT

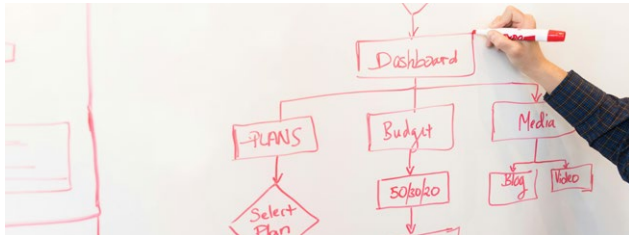
The course supports students in developing skills that are useful for many other areas of study and employment. It fosters an enjoyment of different text types including both literary and non-literary texts, as well as the spoken word. Exam paper 1, 'Telling Stories' covers a range of themes from 'Remembered Places' in our Paris Anthology and 'Imagined Worlds' in 'The Lovely Bones' to Heaney's 'Poetic Voice'. The unit integrates methods of language analysis across the genres. Exam paper 2, 'Exploring Conflict' examines themes from 'Dramatic Encounters', focusing on the conflict within Shakespeare's 'Othello' to writing about society and the role of individuals in Khaled Hossein's 'The Kite Runner'.

### ASSESSMENT INFORMATION

There are three assessed tasks; exam paper 1 is 3 hours long and worth 40%; exam paper 2 is 2.5 hours long and worth 40%; and there is also a 2,500-3,000 word investigation worth 20%.

### FUTURE PROGRESSION

Students could enter the field of Law, Teaching, Journalism, Creative writing, Business, or English study at higher education.



## Extended Project Qualification - Level 1- 3 EPQ

### ENTRY REQUIREMENTS

There are no previous requirements, however a good level of written English is desirable.

### COURSE CONTENT

In Extended Project, students undertake a personal project which can be an extension of their studies or based on a topic of personal interest. All projects must meet four assessment objectives including managing and planning; use of sources; developing and using research; and reflection and evaluation. Work is marked holistically, and evidence can be collected across three core pieces of evidence including a written report of 5,000 words, a production log and delivery of a presentation to an audience.

### ASSESSMENT INFORMATION

The work is marked against four assessment objectives and suitable projects must provide enough evidence to meet them effectively. Work is internally marked and assessed, and externally moderated.

### FUTURE PROGRESSION

This qualification is an excellent subject for students who wish to develop independence and organisational skills. It is an impressive addition to any university application as it demonstrates that students are well prepared for higher education.



## Food Science & Nutrition - Level 3 Certificate or Diploma

### ENTRY REQUIREMENTS

Grade 4 in Maths, English and Science.

### COURSE CONTENT

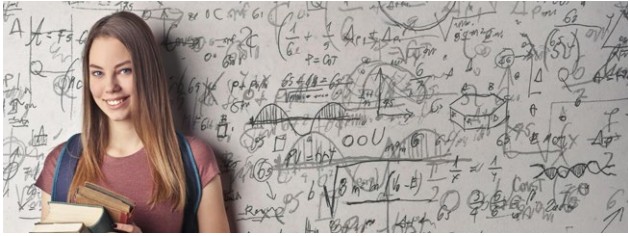
In this subject you will develop your knowledge and understanding of food, and discover the scientific methods used to produce the food we eat. In Year 12 you will investigate the nutritional needs of specific groups whilst developing your knowledge of food safety, food science and factors affecting food choice. You will also develop skills in preparation, cooking and presentation through high level cookery sessions. In Year 13, you will enhance your knowledge of food safety and bacteria and will have the option to complete a research project in a topic of your choice or a practical investigation into food production.

### ASSESSMENT INFORMATION

Both the certificate and diploma are assessed by a combination of practical and written based controlled assessment, coursework projects and written exams.

### FUTURE PROGRESSION

This subject can lead to higher education opportunities including Degrees in Food Science and Nutrition, Dietetics, Nutrition and Food Safety. There are also direct career routes and degree apprenticeships in this sector.



## Further Maths - AS & A' Level

### ENTRY REQUIREMENT

Grade 8 in GCSE Mathematics.

### COURSE CONTENT

Further Mathematics at King James I Academy is split into two areas; Core Pure Maths and Decision Maths, which will be studied in both Years 12 and 13. Students will also learn how to use a graphical calculator. AS Further Mathematics students will be studying this A' Level alongside the AS Level Mathematics and will undertake work on numerous new topics including matrices, complex numbers, polar coordinates, discrete mathematics, algorithms and statistical distributions. A' Level Further Mathematics students will extend and deepen knowledge gained in Year 12 and will also gain knowledge of hyperbolic functions, differential equations, linear programming and critical path analysis amongst other topics.

### ASSESSMENT INFORMATION

At AS Level, there are two papers to be completed in the Summer term; both are 100-minute calculator papers worth 50% of the final grade each. At A' Level, there are four papers to be completed in the Summer term; all are 90-minute calculator papers worth 25% of the final grade each.

### FUTURE PROGRESSION

Students can progress onto various degree courses and pursue careers in STEM fields, Finance and Technology.



## Geography - A' Level

### ENTRY REQUIREMENTS

Grade 6 at GCSE Geography, plus four other GCSEs at grade 4.

### COURSE CONTENT

This course examines the interactions between human societies and the natural world, covering topics like Earth's processes, landscapes, and environmental challenges, with a focus on understanding geographical concepts like systems, feedback, inequality, and sustainability. Students will investigate both physical and human geography aspects, including global systems, urban environments, population dynamics, and resource security across two years, and other topics including the water and carbon cycle; coastal systems; hazards; contemporary urban environments; changing places; global systems and governance. You will also complete a 3,000 - 4,000 word non examined assessment.

### ASSESSMENT INFORMATION

There are two written exam papers; both are 2 hours 30 minutes long and worth 40% of the final grade. The final component is a non-examined assessment based on independent investigation and worth 20% of the overall grade.

### FUTURE PROGRESSION

Students may choose a Geography, Environmental or Conservation Degree and pursue a career in Sustainable planning, Forestry, Renewable energy, Surveying, or Waterways management.



## Health & Social Care - AAQ Extended Certificate

### ENTRY REQUIREMENTS

Grade 4 in GCSE English Language and GCSE Biology as a minimum.

### COURSE CONTENT

This qualification will help you develop skills that prepare you for progression to university or into employment. You will develop transferable skills that can be used in both higher education and work situations, and will learn real-life skills and approaches that can be applied in practice within the sector, such as using a person-centred approach to recommend care and support; safeguarding vulnerable individuals; recommending support; creating and presenting advice and guidance based on specific needs and circumstances; and creating diet and activity plans.

### ASSESSMENT INFORMATION

You will complete six units of work, which are individually graded. There are two examined units, which are worth 40% of your final grade when combined. There are also four non-examined assessments, which are completed coursework-style; these are worth 60% of your final grade.

### FUTURE PROGRESSION

This is the ideal course for those seeking a career in Nursing, Midwifery, Social Work, Early Years, Education, Support Work, Public Health Work, Counselling, Paramedic Science and Occupational Therapy.



## History - A' Level

### ENTRY REQUIREMENTS

GCSE History grade 5, GCSE English Language or Literature grade 4, plus three other GCSEs at grade 4.

### COURSE CONTENT

This course involves a combination of assessed coursework and formal written exam papers. Written exam paper 1, 'Britain Transformed, 1918-1973', is worth 30% of the final marks; exam paper 2, 'The USA, 1955-92', is worth 20% of the final marks; and exam paper 3, 'The Witch Craze in Britain, Europe and North America, c1580-c1750', is worth 30% of the final marks. For the coursework element, students complete an independently researched enquiry on historical interpretations, and consider the question, 'Was the Final Solution a long term plan?' This is submitted as a 4,000 word essay which is worth 20% of the final overall grade.

### ASSESSMENT INFORMATION

There are three formal written exam papers, which are completed in the summer of Year 13, plus a 4,000 word independent coursework assignment.

### FUTURE PROGRESSION

Students may choose to study a degree in History, Law, Criminology, Psychology or Archaeology with a view to a career in Heritage and Museums, Journalism and the Media, Historical Research, Teaching, the Law, the Police or in Business.



## Human Biology - AAQ Extended Certificate

### ENTRY REQUIREMENTS

Grade 4 in GCSE Biology or Grade 4-4 in Combined Science, plus grade 4 in English Language.

### COURSE CONTENT

Human Biology is the comprehensive study of the human organism, encompassing its structure, function, evolution, development, and interactions with the environment and other organisms. In other words, the study of you and how you work. Over the two years, you will study all aspects of human biology as set out in the unit list: Fundamentals of human biology; Health and disease; Genetics; Biomedical techniques; and Nutrition and metabolism.

### ASSESSMENT INFORMATION

Fundamentals of human biology and health and disease will be externally assessed in two formal papers. There will be one 75-minute exam in both Years 12 and 13; and they will be worth 60 marks each. Other units will be assessed through a portfolio of work and the marks for all of these units will be combined to provide you with your final grade.

### FUTURE PROGRESSION

Students may choose further study to progress into careers such as Nursing or Midwifery; Pathology; Pharmaceutical industries; Clinical research; and as a Paramedic.



## IT: Data Analytics - AAQ Extended Certificate

### ENTRY REQUIREMENTS

Grade 4 in Maths and English, plus two other GCSEs at grade 4.

### COURSE CONTENT

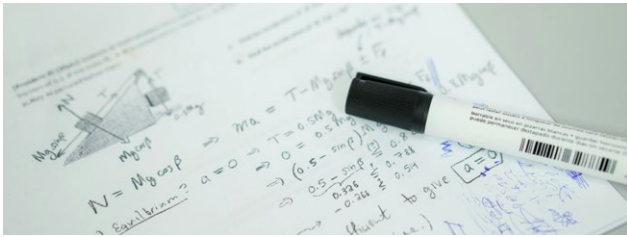
Topics covered on the course include understanding and managing data across platforms, legal considerations, and job roles, skills and attributes in data analytics. You will also study infrastructure challenges of big data, principles of spreadsheet modelling, and planning and creating the spreadsheet model. There are also optional units and students must complete two of these in order to gain the full qualification. These include Relational database design; Data and the Internet of Everything; Data visualisation; and Data and digital marketing.

### ASSESSMENT INFORMATION

For this qualification, students must complete five units in total. There are two mandatory, externally assessed units and three internally assessed coursework units, and the results of all units are combined to determine the overall grade.

### FUTURE PROGRESSION

On completion of this course students may choose to progress to higher education courses in Information Technology or study in related areas such as Business Analytics, Finance and Digital Marketing.



## Maths - AS & A' Level

### ENTRY REQUIREMENTS

Grade 7 in GCSE Mathematics.

### COURSE CONTENT

The A' Level Mathematics course is split into three separate sections; Pure, Statistics and Mechanics, all of which are studied in both Years 12 and 13. Throughout the course students will develop skills such as analysis, justification and forming logical arguments. AS Mathematics students will extend their understanding of coordinate Geometry, Algebra and Statistics, alongside learning new topics including binomial expansion, calculus, exponentials and logarithms, hypothesis testing and mechanics. A' Level Mathematics students will extend and deepen knowledge gained in Year 12 and will also gain knowledge of sequences and series, functions, numerical methods, partial fractions, parametric vectors and the normal distribution.

### ASSESSMENT INFORMATION

At AS Level, there are two papers to be completed in the Summer term; both are 90-minute calculator papers worth 50% of the final grade each. At A' Level, there are three papers to be completed in the Summer term. All are 2-hour calculator papers, worth 33.33% of the final grade.

### FUTURE PROGRESSION

Students may choose to continue onto higher education degree courses and pursue careers in STEM fields, Finance, Data Analytics and Technology.



## Mathematical Studies - Level 3 Certificate

### ENTRY REQUIREMENTS

Grade 4 or higher in GCSE Maths.

### COURSE CONTENT

Mathematical Studies is a 1-year course which deepens students' existing skills developed during their GCSE maths course as well as introducing some new skills. There is an emphasis on problem-solving in real world scenarios. This course complements Business Studies, Accounting and Science courses where A' Level Maths is not taken. Students will look at taxation, loans repayments, modelling and Fermi Estimation, and build upon previous statistical knowledge studied at GCSE. They will also learn about the normal distribution and regression.

### ASSESSMENT INFORMATION

There are two papers to be completed in the Summer term. They are both 90-minute long calculator papers worth 50% of the final grade each. Paper 1 focuses on Personal Finance and Statistics and paper 2 upon Statistical Techniques.

### FUTURE PROGRESSION

This course can support students who go on to study at university for any of the following subjects; Psychology, Geography, Sport Science and Social Sciences, Natural Sciences, and Business related courses.



## Music Practitioners - RSL Level 3 Subsidiary Diploma

### ENTRY REQUIREMENTS

Primary instrument (grade 3+), Audition process open for instrumental / vocal students.

### COURSE CONTENT

This qualification develops performance skills, musical understanding, and industry knowledge through live performance, technical development and reflective practice, preparing students for further study or a music industry career. Students will complete a combination of practical, performance and research-based units over the two year programme. They will play music in a band or solo, learn to play in different styles and genres and improve their musicianship, whilst researching different genres of music and using technology to create music. Looking at careers in the music industry and learning how to be a sound engineer for a live event is also part of the course.

### ASSESSMENT INFORMATION

There is one externally marked exam, which is a practical performance, and five internally assessed coursework units.

### FUTURE PROGRESSION

Many students progress into higher education, however related careers include Session musician; Live performer; Music teacher/tutor; Musical director; Composer; Music producer/promoter; Tour manager; Sound technician; Artist manager; Music promoter.



## Performing Arts - Level 3 Extended Certificate

### ENTRY REQUIREMENTS

Grade 5 or above in English, plus an interest, enthusiasm or experience in Drama or Performing Arts.

### COURSE CONTENT

This course will provide students with the opportunity, through applied learning, to develop the core knowledge, skills and understanding required in the performing arts sector. It is delivered and assessed via a combination of practical performances, plus research and a written portfolio. Topics covered include the application and audition process; how to plan a specific arts-based project; arts practitioners and their influence on performance; how art forms are combined to create a bespoke interpretation of an existing work; and the use of improvisation skills to create a performance.

### ASSESSMENT INFORMATION

There are three externally assessed written and performance-based units, plus two internally assessed portfolio and performance-based units. The result of each unit is combined to give an overall grade.

### FUTURE PROGRESSION

Students can progress into a wide variety of university courses, not necessarily related to the Arts.



## Photography - A' Level

### ENTRY REQUIREMENTS

Grade 6 in GCSE Photography. Grade 5 or no prior study may be satisfactory pending a portfolio review with department.

### COURSE CONTENT

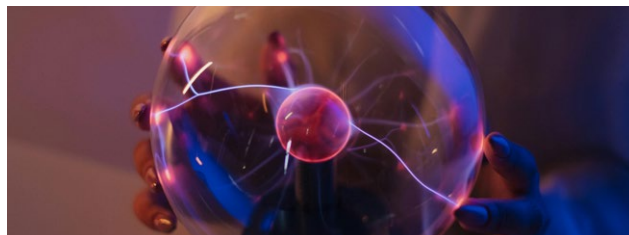
You will investigate different photography techniques and styles of photography during this two year course, developing your own portfolio of photography work. Students will undertake a preliminary six week experimental project, focused on the development of skills which are essential for A' Level study in Photography. This will then lead into Component 1's research and portfolio, which is supported by a 3,000 word piece which supports the practical work undertaken. In their second year, students will work on an externally set assignment where they will produce a second portfolio of work and final piece under exam conditions.

### ASSESSMENT INFORMATION

Component 1 is an internally assessed and externally moderated investigation worth 60% of the final grade. Component 2 is an externally set exam, which is also internally assessment and externally moderated; this is worth 40% of the final grade.

### FUTURE PROGRESSION

This qualification could lead to further study of Photography at university or other art and design based courses. It could also lead to possible apprenticeship opportunities within the arts or employment.



## Physics - AS & A' Level

### ENTRY REQUIREMENTS

Grade 6 in GCSE Physics or grade 6-6 in Combined Science plus grade 6 in Maths. Maths study at least at AS Level is recommended to support Physics A' Level.

### COURSE CONTENT

Physics is the study of the fundamental laws governing the universe. It explores the underlying principles that explain how the universe works, from the very small (quantum mechanics) to the very large (general relativity). This foundational science provides the bedrock for many other scientific disciplines and technological advancements. Topics studied include particles and radiation; waves; mechanics and materials; electricity; further mechanics and thermal physics; fields and their consequences; nuclear physics; medical physics; and astrophysics. This learning is completed through formal teaching, a variety of practical experiments and independent study.

### ASSESSMENT INFORMATION

AS Level examinations will be sat at the end of Year 12; there are two papers, each lasting 90 minutes. A' Level examinations will be sat at the end of Year 13 and there are three two-hour papers.

### FUTURE PROGRESSION

This qualification is an ideal basis for higher education and a career in Civil Engineering; Architecture; Astronomy; Robotics; Aviation and Technology.



## Psychology - A' Level

### ENTRY REQUIREMENTS

Grade 6 in either English Language or Literature, plus grade 5 in Sciences and Maths. It is recommended, but not essential, that students take Mathematical Studies alongside Psychology to support the mathematical element of the course.

### COURSE CONTENT

Psychology is the scientific study of the mind, how it works and how it affects our behaviour. It involves learning about different approaches to explaining behaviour and treating abnormal behaviour. The subject is evidence-based and involves analysing empirical data. On the course, you will study social influence, memory, attachment theories, psychopathology, approaches in psychology, biopsychology, issues and debates, forensic psychology, cognition and development, and schizophrenia. Research methods underpin the study of psychology, so they will be featured throughout. This course takes place across two years.

### ASSESSMENT INFORMATION

The course is assessed with three external examinations which are taken at the end of Year 13, each lasting two hours and worth a third of the final grade.

### FUTURE PROGRESSION

The course can lead to higher education and careers in Counselling, Teaching, policing, social work, health care, Management, Clinical psychology, Forensic psychology, and Educational psychology.



## Sociology - A' Level

### ENTRY REQUIREMENTS

Grade 5 in English Language or Literature, plus four more GCSEs at grade 4 and above.

### COURSE CONTENT

Sociology is the study of society, its structures and systems, and how they influence individuals. You'll explore how much free will individuals truly have, and whether it's a good idea for us to all share the same beliefs. The course is designed to ensure you study a variety of aspects of our society, applying central themes of power and social control to each one. In Year 12 you will study culture, identity and education, as well as theory and methods. In Year 13, you will explore crime and deviance and the media. Your experiences and ideas will be welcome in classroom discussions.

### ASSESSMENT INFORMATION

There are three external exams to be sat at the end of the course in summer of Year 13. Paper 1 covers Education, Theory and Methods in Context; Paper 2 covers Culture and Identity and The Media; and Paper 3 focuses on Crime & Deviance. Each exam is two hours long and will involve essay-style tasks.

### FUTURE PROGRESSION

Sociology will support you as you progress to a range of career pathways including Teaching, Social work, Policing and criminal justice, Government and Politics, Journalism, Social research, Youth work and Community charity work.



## Sports - Level 3 Extended Certificate or Diploma

### ENTRY REQUIREMENTS

Grade 4 in Maths, English and Biology. It is also desirable to have grade 4 in GCSE PE or Level 2 Pass in BTEC Sport.

### COURSE CONTENT

C-TECH Sport can be studied at two levels, either the Extended Certificate (one A' Level equivalent) or the Diploma (two A' Level equivalent). Both courses are two years long and include external exams, practical tasks and coursework units. Units include body systems and the effects of physical activity; sports coaching and leadership; sports organisation and development; sports injuries and rehabilitation; and practical skills in sport and physical activity. The Diploma also explores safety in sport; performance analysis; organisation of sports events; biomechanics; physical activity for specific groups, and sports and exercise psychology.

### ASSESSMENT INFORMATION

The Extended Certificate course includes three coursework units and two external exams, and the Diploma course includes eight coursework units and three external exams.

### FUTURE PROGRESSION

Students may choose to progress to higher education or apprenticeships, and a career in Teaching, Sports coaching, Management or Physiotherapy.



## Level 2 Pathway

This pathway is primarily for students who have not yet secured GCSE English and/or Maths at a grade 4 or above. It is designed as a one year programme for students to work towards Level 3 study, or progression into employment.

### PROGRAMME CONTENT

- GCSE or Functional Skills English Language\*
- GCSE or Functionals Skills Maths\*
- BTEC Level 2 in Work Skills
- EPQ Level 1 / 2 (optional)

### WORK PLACEMENT

This programme encourages students to identify employability skills and personal qualities, and to build on any areas which are relevant to future goals. It prepares students for employment, as well as leaving the option of further academic study open.

*\*If a grade 3 is held in GCSE Maths or English, then GCSE resits will be required. If a student holds a grade 2 or below in English or Maths, then a Functionals Skills qualification may be offered.*



## Contact us

King James I Academy Sixth Form Centre  
South Church Road  
Bishop Auckland  
County Durham  
DL14 7JZ

01388 603388

[www.kingjames1academy.com](http://www.kingjames1academy.com)

Instagram: @kj1life & @kj1sixth

Facebook: King James I Academy Sixth Form